



Total Solution Provider in Saw Device

SA11214AD1

112.5 MHz IF SAW Filter
14.45 MHz Bandwidth
Revision 0: 28. JUNE. 2008



- Electrical Characteristics
 - Package Dimensions
 - Testing Environment
 - Frequency Characteristics
-

SAWNICS Inc.

460 Cheonheung-ri, Seonggeo-eup, Cheonan-si, Chungcheongnam-do, 330-836 / Korea.
Tel: +82 41 550 9372 / Fax: +82 41 550 9399 / www.sawnics.com

□ Electrical Characteristics

Maximum Ratings

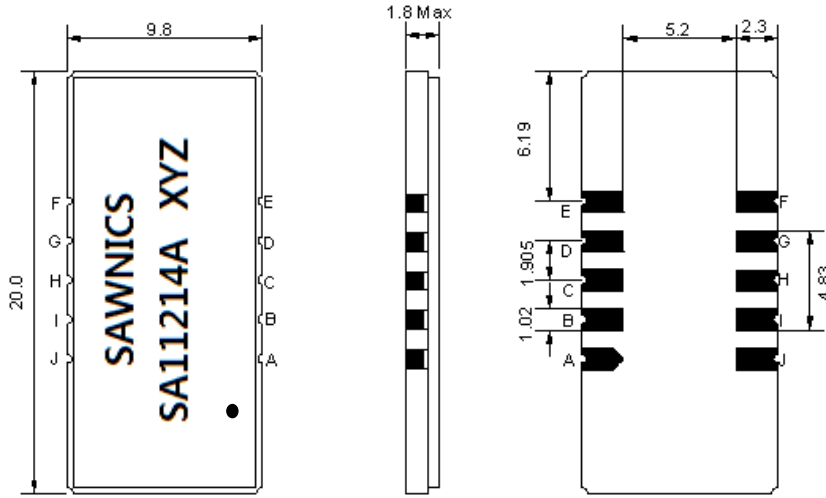
Parameters Description	Unit	Minimum	Typical	Maximum
Operation Temperature Range	°C	-30	-	80
Storage Temperature Range	°C	-40	-	85
Maximum DC Voltage	V	-	-	10
Maximum Input Power	dBm	-	-	10
Source Impedance (single ended) ⁽¹⁾	Ω	-	50	-
Load Impedance (single ended) ⁽¹⁾	Ω	-	50	-
Package type & size	D1			
Length x Width	mm ²	-	20.0 x 9.8	-
Height	mm	-	-	1.8

Electrical Specification

Parameters Description	Unit	Minimum	Typical	Maximum
Center Frequency (Fo)	MHz	112.40	112.50	112.60
Insertion Loss at Fo	dB	-	23.20	24.00
Group Delay Variation	ns	-	40	100
Absolute Delay at Fo	us	-	2.29	-
Passband Ripple Variation	dB	-	0.60	0.95
Bandwidth at -1dB	MHz	-	14.45	-
Bandwidth at -3dB	MHz	14.60	14.72	-
Bandwidth at -50dB	MHz	-	16.10	16.25
Ultimate Rejection	dB	50	55	-
Temperature coefficient	ppm/°C	-	-72	-

Notes : (1) With Matching Network (Ref. Testing Environment Circuit as shown below).
Those impedances could be modified with different impedance values and/or structures, if necessary.

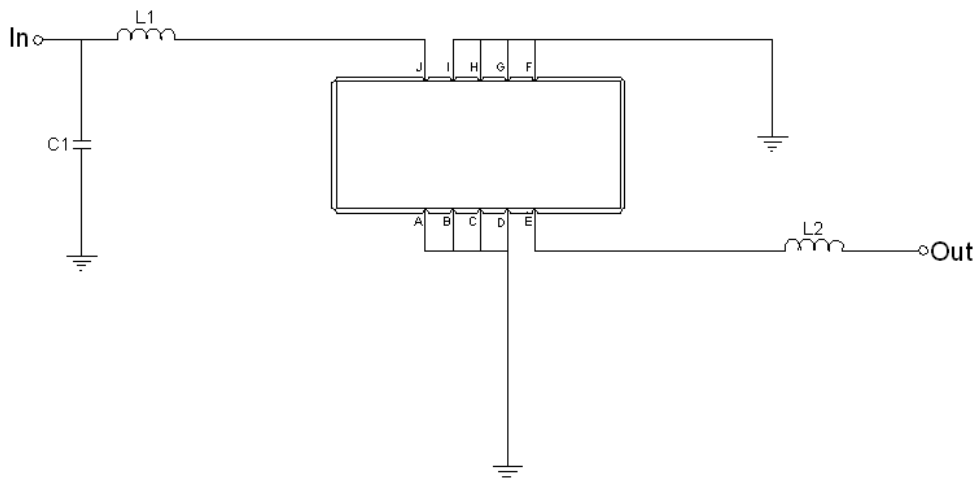
□ Package Dimensions



- ① SAWNICS: Brand
- ② SA11214A: Model Name
- ③ X : Date Code (Year)
- ④ Y : Date Code (Month)
- ⑤ Z : Date Code (Date)
- : Index Dot

Pin Description	
A, B, C, D, F, G, H, I	Ground
J	Input
E	Output

□ Testing Environment

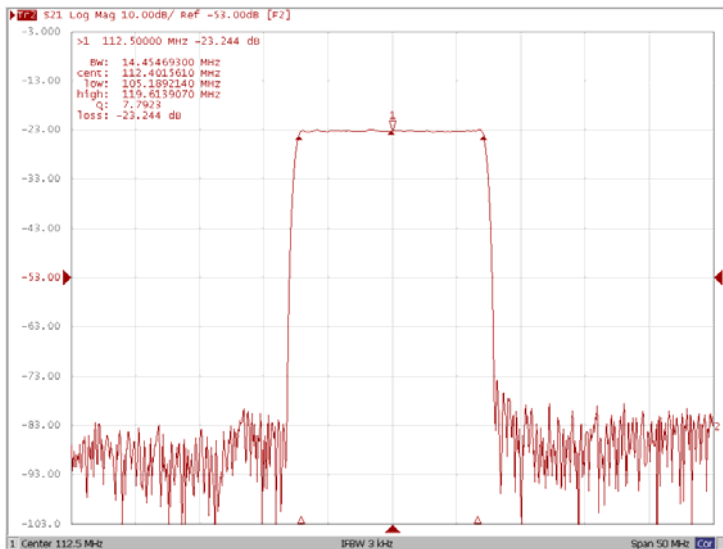


Test Fixture & Values	
Input	L1=27nH, C1=22pF
Output	L2=27nH
Source/Load Impedance	50 Ω

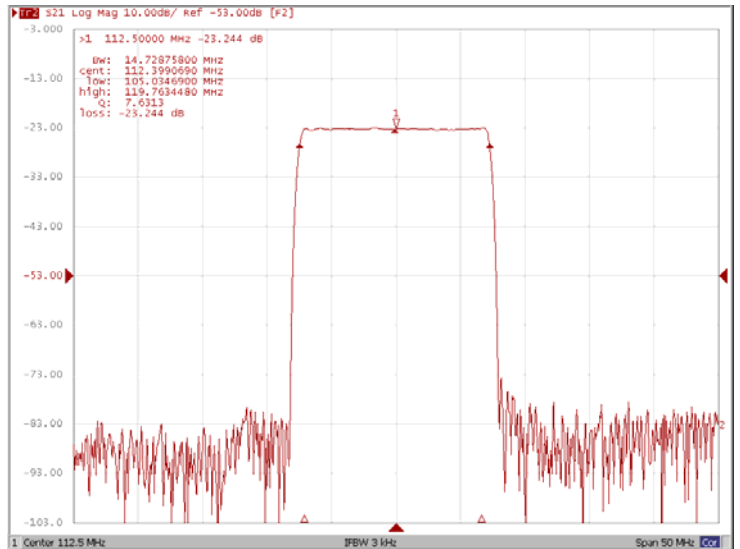
□ Frequency Characteristics

Frequency Response

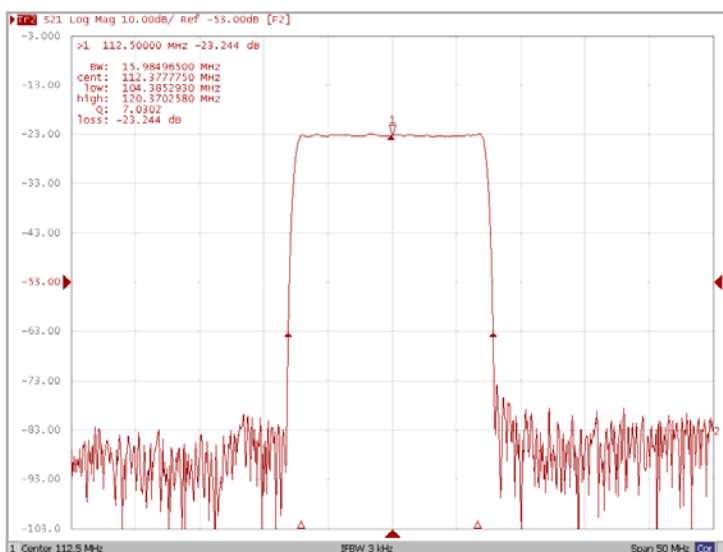
Bandwidth at -1.0 dB



Bandwidth at -3.0 dB



Bandwidth at -40.0 dB



Bandwidth at -50.0 dB



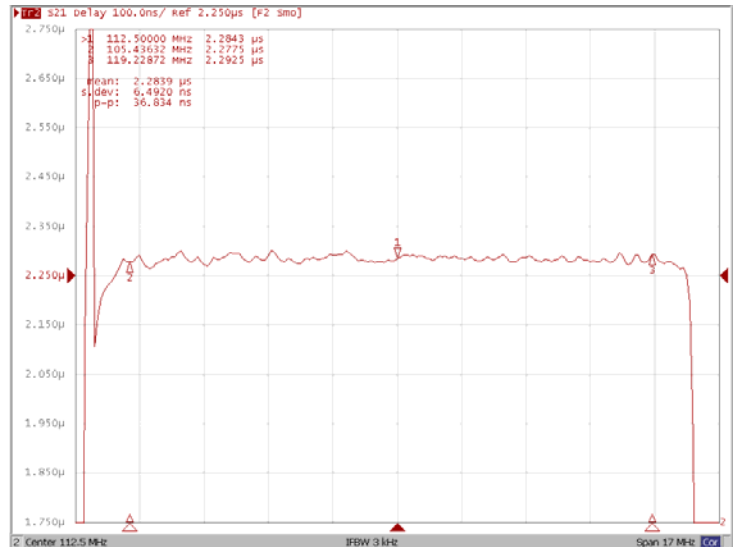
□ Frequency Characteristics

Frequency Response

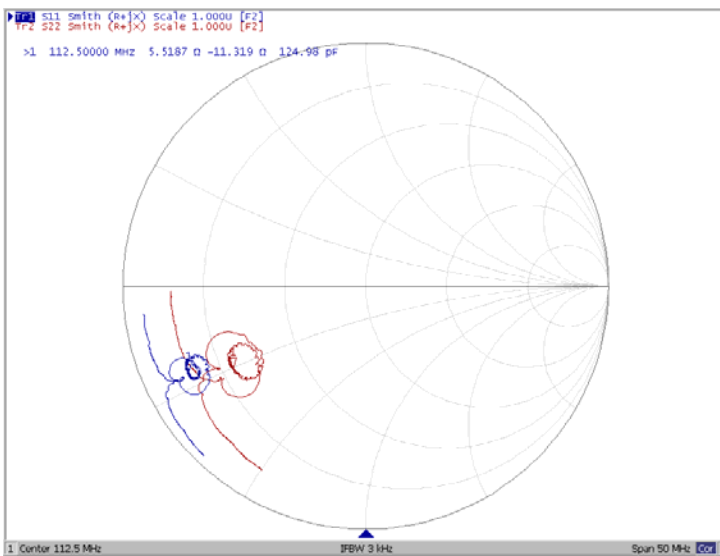
Ripple Variation



Group Delay Variation



Smith Chart



VSWR

